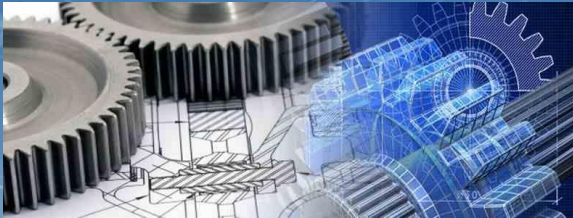




# MAQUINADOS ROSMAN CNC

MACHINING SOLUTIONS

**ENGINEERING**



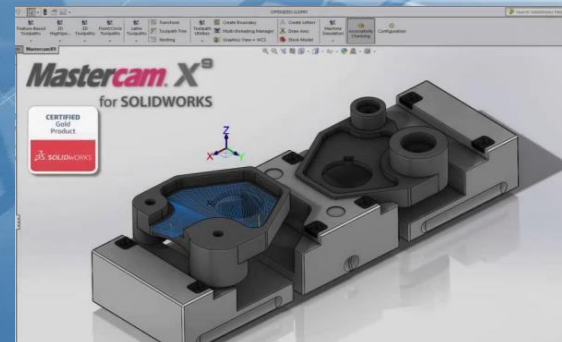
**MANUFACTURING**



**CNC MACHINING**



**DESIGN**



INDEPENDENCIA #901, COL. LAS MALVINAS, ESCOBEDO NUEVO LEON, MEXICO

TEL. (81) 82985698

[www.rosman.mx](http://www.rosman.mx)

[maq.cnc@rosman.mx](mailto:maq.cnc@rosman.mx)

[sales.cnc@rosman.mx](mailto:sales.cnc@rosman.mx)



## INDUSTRY

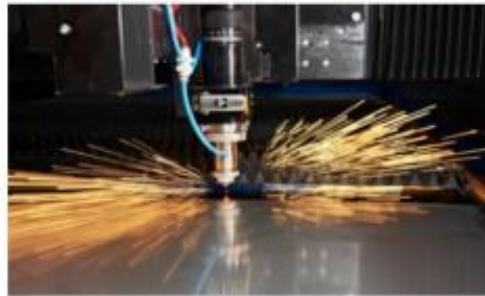
---

**ROSMAN CNC MACHINING** IS A 100% MEXICAN COMPANY WITH OVER 20 YEARS EXPERIENCE IN THE MARKET, DEDICATED TO THE DESIGN, MANUFACTURING, SERIAL PRODUCTION AND MAINTENANCE OF PARTS FOR MACHINERY AND PERIPHERAL EQUIPMENT OF DIFFERENT INDUSTRIAL SECTORS.

PAPER INDUSTRY



METAL - MECHANIC



FOOD INDUSTRY



AUTOMOTIVE



CHEMISTRY



OIL-GAS





## EXTENSIVE FACILITIES

---

WE HAVE MODERN MACHINERY, COMPUTER NUMERIC CONTROL EQUIPMENT (CNC), AND HIGHLY QUALIFIED PERSONAL FOR TO EACH ONE OF THE DIFFERENTS NEEDS OF THE INDUSTRY.



THE 90% OF OUR PRODUCCION IS FOR EXPORT FOR THE MARKET OF THE UNITED STATES OF AMERICA AND THE REMAINING 10% FOR NATIONAL MARKET.



## WORK CAPABILITIES

ALL OUR MACHINERY ARE LAST GENERATION, EQUIPMENT YEAR 2006, 2010, 2016, 2018 AND 2020

### CNC MACHINERY

- 1 CNC SWISS TYPE LATHE CITIZEN A20 WITH DRAW BAR
- 6 HAAS LATHE MAXIMUM CAPACITY TO UP 30 INCHES AND 35 INCHES LONG
- 2 HARDINGE LATHE, MAXIMUM CAPACITY TO UP 15 INCHES AND 25 INCHES LONG
- 2 GANG LATHE CAPACITY OF 14 X 10 INCHES
- 1 HAAS VERTICAL MACHINE CENTER, STROKE OF 18 X 20 X 25
- 1 CUTTING MACHINE WITH THREAD ACUTEX MODEL AI500
- 1 PENETRATION MACHINE OSCARMAX MODEL S430
- 3 HAAS HIGH SPEED DRILL CENTER, STROKE OF 20 X 16 X 16
- 1 MACHINING CENTER VMC850 OF WORK AREA OF 16 X 20 X 40 INCHES
- 3 TRAUB MACHINE WITH CAPACITY OF 25MM





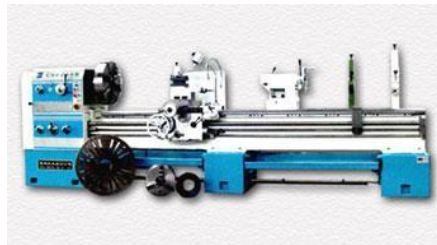
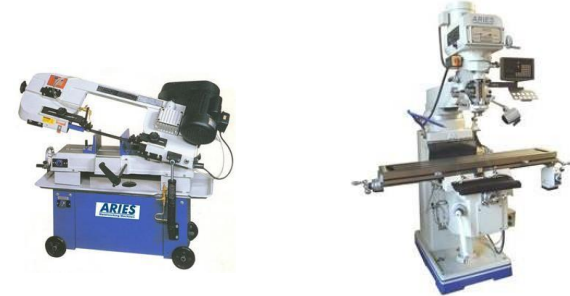
## WORK CAPABILITIES

---

ALL OUR MACHINERY ARE LAST GENERATION, EQUIPMENT YEAR 2006, 2010, 2016 Y 2018

### CONVENTIONAL MACHINERY

- 4 HORIZONTAL LATHE, MAXIMUM CAPACITY 30 X 80 INCHES
- 5 BRIDGEPORT KNEE MILLS OF 12 X 36 X 20 INCHES
- 2 HORIZONTAL SAWS OF 8 X 12 INCHES
- 1 FAGOR PUNCH PRESS OF 3 TONS
- 1 LINCOLN ELECTRICAL WELD EQUIPMENT OF 300 AMPS
- 1 WELD AUTOGENOUS EQUIPMENT





## QUALITY

IN **MAQUINADOS ROSMAN CNC** WE ARE AWARE ENGAGEMENT WITH INTERNATIONAL QUALITY SYSTEMS, AND THAT IS WHY WE ARE A COMPANY IN WAY TO CERTIFICATION ISO 9001 - 2015 THIS FOR THE MAXIMUM EFFICIENCY TIME IN EACH OF OUR MANUFACTURING PROCESS. WE ARE IN THE PROCESS OF IMPLEMENTING THE IATF 16949 STANDARD .





# PERRY JOHNSON REGISTRARS, INC.

## *Certificado de Registro*

*Perry Johnson Registrars, Inc., certifica el Sistema de Gestión de la Calidad de*

**Maquinados Rosman CNC, S.A. de C.V.**  
*Independencia # 901, Col. Las Malvinas, Escobedo, Nuevo León, C.P.66058, México*

*De ahora en adelante denominada la organización, declara por este medio que está en conformidad con:*

**ISO 9001:2015**

*Este registro incluye el siguiente alcance de certificación*

**Fabricación de Piezas Maquinadas**

*Este Certificado es concedido de acuerdo a las reglas que rigen el Sistema de Registro anteriormente mencionado, comprometiéndose la Organización, con la Entidad que la certifica, a observar y mantenerse conforme la regulación establecida y cumplir con los requisitos indicados.*



**PERRY JOHNSON REGISTRARS, INC.**



**ema**  
ORGANISMO DE CERTIFICACIÓN  
EXCREDITADO 84172



**PERRY JOHNSON REGISTRARS, INC.**  
UKAS  
MANUFACTURING  
20184



**Perry Boboige, Presidente**  
Perry Johnson Registrars, Inc. (PIR)  
755 West Big Beaver Road, Suite 1340  
Troy, Michigan 48064  
(248) 358-3388

*El Uso del símbolo de Acreditación UKAS es con respecto a las actividades cubiertas por el Certificado de Acreditación Número 0105.  
La validez de este certificado es administrada por medio de vigilancia continua.*

<i>Fecha de Emisión:</i>	<i>Fecha de Vigencia:</i>	<i>No. del Certificado:</i>
18 Junio 2020	17 Junio 2023	C2020-01874



## SOME APLICATIONS

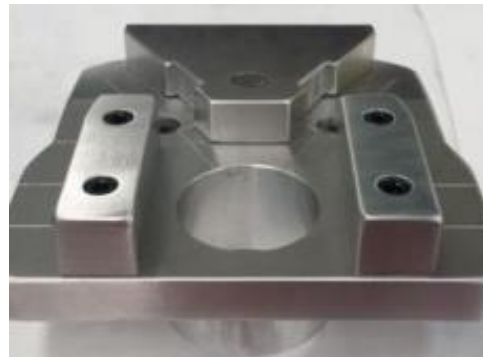
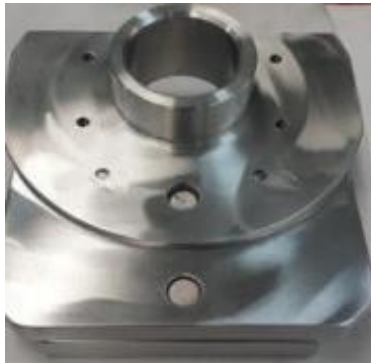
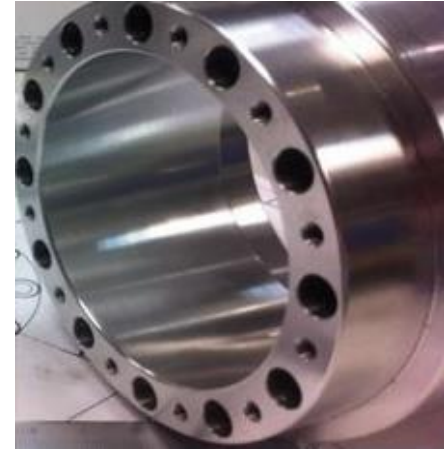
---





## SOME APLICATIONS

---





## SOME APLICATIONS

---





## OUR CUSTOMERS

---



OUR EXPERTISE. YOUR ADVANTAGE.

